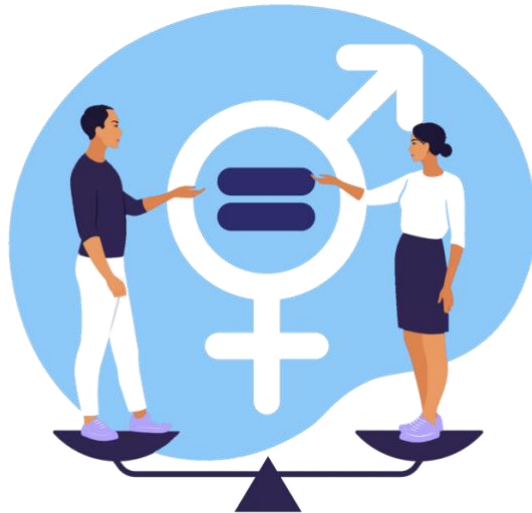




Nalbari College

Nalbari, Assam 781335



Gender Audit Report 2023-2024

PREPARED BY
Gender Audit Team


Gender Audit Report

Submitted to

The Principal

Nalbari College, Nalbari, Assam

Submitted by
Audit Team

SL. No.	NAME	Nature of appointment	Signatures
1	Dr. Kamal Nayan Patowary, Principal	Chairman	
2	Dr. Piroja Begum, Associate Professor, Department of Mathematics	Member	Piroja Begum
3	Dr. Aditi Das, Assistant Professor, Department of Economics	Member	Aditi Das
4	Dr. Rupsmitta Buzarbaruah, Assistant Professor, Department of Sanskrit	Member	Rupsmitta
5	Kaberi Dutta, Assistant Professor, Department of Political Science	Member	Kaberi Dutta
6	Gracy Lalmaswam Khobung, Assistant Professor, Department of English	Co-ordinator	Gracy Lalmaswam Khobung

PREFACE

Globally, gender parity is an essential component of an educated and progressive academic environment. It is more than just a reflection of societal norms; it also plays a crucial role in developing an atmosphere that encourages intellectual rigor and equal opportunities. Scholars of repute have emphasized the significance of gender equity in educational settings because it helps students realize their collective potential and enhances the educational experience for all. Nalbari School perceives the meaning of orientation uniformity. It has rigorous mechanisms in place to guarantee that it is used in practice on the college campus rather than just as a policy. The establishment's obligation to this cause is evident in its thorough orientation reviews. These reviews are intended to look at the current designs and practices in the school and encourage a nuanced comprehension of orientation elements. Distributing well-crafted questionnaires to faculty and students, encouraging an inclusive dialogue, and ensuring that every voice is heard and valued are all part of the strategy.

The aftereffects of these reviews are restricted to measurable investigation and are additionally used to illuminate vital drives and instructive changes. The point is to establish a grounds climate that isn't just protected and steady for all sexes but also enables ladies and destroys verifiable orientation inclinations. Nalbari School endeavors to add to the worldwide story of orientation correspondence, conforming to the Unified Countries' Manageable Improvement Objectives and supporting its job as a groundbreaking instructive organization. By supporting orientation uniformity, Nalbari School expects to make a culture of inclusivity and variety, mirroring the conviction that fair treatment and open doors are the signs of a cutting-edge instructive foundation. The college strives to shape future leaders who are academically proficient, socially responsible, and gender-sensitive, positioned to contribute constructively to the world's burgeoning intellectual and cultural tapestry. It does this by dedicating itself to fostering an environment that is balanced and fair in the classroom.

Nalbari College

Nalbari, Assam

Since its founding on July 4th, 1945, Nalbari College has grown to become a well-known academic hub in Assam's lower Brahmaputra valley. The college's dedication to academic excellence was cemented in 1948 when it joined Gauhati University, having previously been associated with Calcutta University. The institution was granted UGC accreditation in 1962 under Section 2(f) and has grown significantly. Currently, 4420 students are enrolled in its Higher Secondary program and other courses across its 16-acre campus. Nalbari College is renowned for providing a wide range of upper secondary to postgraduate level courses in a multi-streamed coeducational learning environment. The college prioritizes employability and drives UGC-sponsored job-oriented programs in disaster management and travel and tourism guidance. Professional courses like the Bachelor of Physical Education (B.P.E.) are also available. P. The Bachelor of Science in Information Technology (B.S.) and E. Sc. IT) starting in 2013. Through affiliating centers of the Institute of Distance and Open Learning (IDOL), Krishna Kanta Handique State Open University (KKHSOU), and Assam State Open School (ASOS), Nalbari College expands its educational outreach through distance learning programs, ensuring accessibility. The college is committed to improving students' employability and has plans to implement cutting-edge programs. On its grounds, Nalbari College additionally supports gender equality. The organization has carried out this as part of its initiatives.

ABOUT GENDER AUDIT

A Gender Audit is a type of evaluation different from traditional financial audits. It aims to assess the level of institutionalization of gender equality within organizations. This includes evaluating policies, programs, projects, services, structures, and proceedings, The audit also evaluates how well different criteria align with the institution's primary purpose and thoroughly analyzes gender balance among students, faculty members, and administrative staff levels. The Gender Audit also examines the impact of current policies on gender equality within society. By conducting this assessment, institutions can develop targeted interventions, redefine existing policies, and promote more equitable opportunities for all members, regardless of gender. This comprehensive audit provides valuable insights for institutions aiming to create a more diverse and supportive culture.

The objective of Gender Audit

The primary objective of a gender audit is to systematically and critically examine an organization's activities and policies to ensure gender equality is being effectively integrated into all its operations. It aims to pinpoint strengths and areas needing improvement in promoting gender equality and to create practical strategies for addressing gender gaps and enhancing gender-sensitive practices. The audit is a tool for organizational learning, accountability, and transformation toward a more inclusive and equitable environment.

Key Steps in Gender Audit

- **Preparation:** Establish objectives, engage stakeholders, and develop tools.
- **Training:** Educate the team on gender concepts and audit methodologies.
- **Data Collection:** Utilize diverse methods to gather and analyze data.
- **Findings:** Summarize insights, highlighting both achievements and gaps.
- **Action Plan:** Develop and assign clear steps and responsibilities.
- **Follow-Up:** Implement, monitor, and evaluate progress towards gender equality.

Methodology

The Gender Audit team thoroughly analyzes the college community to gather insights from various stakeholders. They create questionnaires designed to obtain feedback from students across different courses, hostel residents, and esteemed faculty members, to understand the capability of amenities and inclusiveness of the college environment for all genders. The team uses a methodical approach, including simple random sampling to distribute the questionnaires, ensuring a comprehensive understanding of the gender dynamics within the college premises. To make the process more convenient for the respondents, the team uses modern technology such as Google Forms to disseminate the questionnaires via shareable links, giving participants to provide their valuable input. The results of the Gender Audit's subsequent actions aim at fostering a more equitable and supportive educational environment.

Table 1: Gender-wise details of the total students in Nalbari College

SL.No	SESSIONS	TOTAL	MALE	FEMALE
1	2023-2024	868	459	409

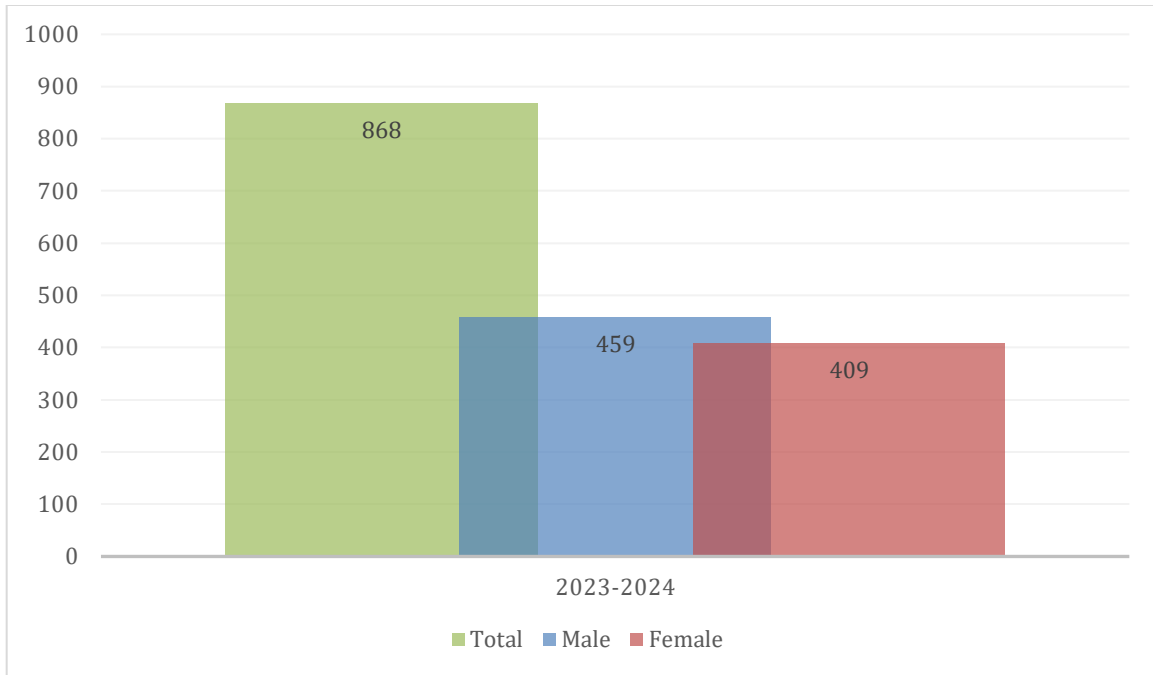


Figure 1: Gender details for total students in Nalbari College

GENDER AUDIT STUDENT RESPONSES

Findings and interpretations

The findings and interpretations for the gender audit of 2023-2024 have not been completed because the session is still ongoing. Gathering and analyzing data takes time, and it is important to be thorough in order to assess the situation accurately. Once the session ends, the results will be compiled, and conclusions will be drawn based on the information gathered.

It is crucial to remember that conducting a gender audit is a complex task that requires careful consideration of various factors. The results of the audit will provide valuable insights into the current state of gender equality within the organization and will help to identify areas that may need improvement. By analyzing the data thoroughly, the organization can make informed decisions on how to promote gender equality and create a more inclusive work environment.

Table 2: Gender-wise details of the total faculty in Nalbari College

SL.No	SESSIONS	TOTAL	MALE	FEMALE
1	2023-2024	57	32	25

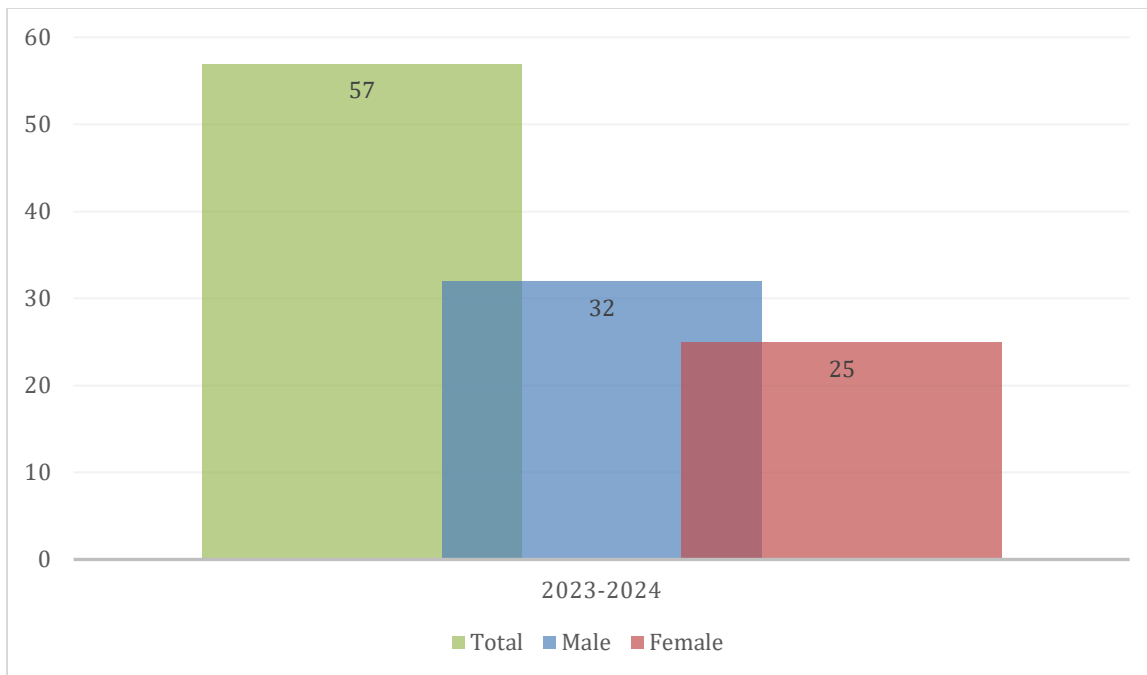


Figure 2: Gender details for total Faculty in Nalbari College

GENDER AUDIT FACULTY RESPONSES

Findings and interpretations

The findings and interpretations for the gender audit of 2023-2024 have not been completed because the session is still ongoing. Gathering and analyzing data takes time, and it is important to be thorough in order to assess the situation accurately. Once the session ends, the results will be compiled, and conclusions will be drawn based on the information gathered.

It is crucial to remember that conducting a gender audit is a complex task that requires careful consideration of various factors. The results of the audit will provide valuable insights into the current state of gender equality within the organization and will help to identify areas that may need improvement. By analyzing the data thoroughly, the organization can make informed decisions on how to promote gender equality and create a more inclusive work environment.